

PALMGREN

**EMBRACE
THE WORK**



**FINISHING MACHINE
CATALOG**

PALMGREN...

A RICH HERITAGE WITH INNOVATION

Palmgren abrasive finishing machines have a rich heritage with innovation. Designed and developed with differentiated and meaningful features our products enjoy a reputation for exceptional quality and performance. We have reached a leadership position in three categories of finishing machines – coated abrasive finishing machines, bonded abrasive grinders as well as buffing and polishing machines.

Machining with coated abrasives is a vital production tool ... accepted and depended on by industry to increase production while reducing costs. Palmgren's machines better adapt coated abrasive technology to an ever widening array of grinding and finishing operations. They are less complex with more power and versatility and can be quickly converted from heavy stock removal to finishing operations allowing for optimum use of the abrasive belt or disc.

The major benefits to abrasive belt or disc machining is productivity, high speed stock removal, intermediate grinding and blending, close tolerance dimensioning and final finishing or polishing all achieved quickly and efficiently.

Palmgren has over 40 different models and types of abrasive finishing and buffing machines to choose from. They are engineered and built to handle, large, medium and small size parts, flat or contoured shaped parts and fit the following four categories.

- 1** **ROUGHING OR COARSE GRINDING** – removes excess metal or imperfections from the workpiece in preparation for subsequent finishing operations.
- 2** **INTERMEDIATE GRINDING & BLENDING** – brings the workpiece to a predetermined size or shape from a "as formed" condition or following a roughing operation.
- 3** **FINAL FINISHING OR POLISHING** – bringing the workpiece to a surface finish required for buffing, plating, bluing or other surface treatments or coatings.
- 4** **PRECISION SIZING & FINISHING** – surface finish refinement producing high quality flat surfaces with close tolerance control.

Palmgren offers you metal finishing solutions from rough grinding to mirror polishing with the most flexible finishing machine technology available today.

INDUSTRY LEADING WARRANTY AND SERVICE

Our 3-year warranty on all finishing machines is the most generous warranty in the industry. We have complete confidence in our products. The length of our warranty is a reflection of our faith in their quality. Naturally, this is manufacturing, stuff happens. Regardless, we hold one constant: if issues should arise, we will be there to make it right with over 25,000 parts in stock and a nationwide service and support network of machine tool repair companies.

PALMGREN
3 YEAR
WARRANTY

EMBRACE THE WORK

*At Palmgren we build tools for
those who choose to work.
Tools that were made to
be used, that flex endless
muscle, take a beating
and ask for more.
Tools that will stand by
you on your daily grind.
Tools that help you
Embrace your Work.*



PALMGREN

Versatility is a major advantage as most machines can be converted from medium to heavy stock removal to finishing operations.

To optimize performance with your finishing machine the chart below is a helpful tool to assist you in identifying the model of finishing machine that works best to fit your specific application.

Abrasive finishing can be divided into four broad categories:

- Roughing or Coarse Grinding - removes excess material or imperfections from the workpiece in preparation for subsequent finishing operations.
- Intermediate Grinding or Blending - bringing the workpiece to a predetermined size or shape from a "as formed" condition or following a roughing operation.
- Final Finishing and Polishing - bringing the workpiece to the surface finish required for buffing, plating, bluing or other surface treatments or coatings.
- Precision Sizing & Finishing - surface finish refinement productin high quality flat surfaces with close tolerance control

TYPE OF MATERIALS TO BE FINISHED						WORKPIECE SIZE		
Ferrous Metals	Non-Ferrous Metals	Wood	Plastic	Carbide	Composites	Small Parts	Medium Parts	Large Parts
9682061	6", 1/3HP, 1PH bench grinder	•	•			•	•	
9692062	6", 1/3HP, 1PH bench grinder	•	•			•	•	
9682071	7", 1/2HP, 1PH bench grinder	•	•			•	•	
9682081	8", 3/4HP, 1PH bench grinder	•	•		•	•	•	
9682082	8", 3/4HP, 3PH bench grinder	•	•		•	•	•	
9682101	10", 1HP, 1PH bench grinder	•	•		•	•	•	•
9682102	10", 1HP, 3PH bench grinder	•	•		•	•	•	•
9682121	12", 2HP, 1PH bench grinder	•	•		•	•	•	•
9682072	6", 1/2HP, PowerGrind-XP bench Grinder	•	•		•	•	•	
9682073	8", 1HP, PowerGrind-XP bench Grinder	•	•		•	•	•	•
9682074	8", 1HP, PowerGrind-XP bench Grinder - 3PH	•	•		•	•	•	•
9682075	10", 1-1/2HP, PowerGrind-XP bench Grinder	•	•		•	•	•	•
9682076	10", 1.75HP, PowerGrind-XP bench Grinder - 3PH	•	•		•	•	•	•
9682077	12", 3HP, PowerGrind-XP bench Grinder 3PH	•	•		•	•	•	•
9682096	6", 1/2HP PowerGrind-XP Variable Speed Bench Grinder	•	•		•	•	•	•
9682097	8", 1HP PowerGrind-XP Variable Speed Bench Grinder	•	•		•	•	•	•
9682098	10", 1-1/2HP PowerGrind-XP Variable Speed Bench Grinder	•	•		•	•	•	•
9682090	6" Grinder 1750 RPM 1/4HP	•	•			•	•	•
9682068	6", 1/3HP, 1PH bench grinder / buffer combo	•	•		•	•	•	•
9682069	8", 3/4HP, 1PH, bench grinder / buffer combo	•	•		•	•	•	•
9682088	Combination 8" wheel bench grinder / 2" x 48" belt grinder	•	•	•	•	•	•	•
9682058	6" Grinder With 1 Wire Wheel	•	•			•	•	•
9682059	8" Grinder With 1 Wire Wheel	•	•			•	•	•
9682060	6" Bench Grinder With Light	•	•			•	•	
9682089	8" Variable Speed Bench Grinder With Wire Wheel	•	•			•	•	
9682066	6" Grinder/Stand Combo	•	•			•	•	•
9682078	8" Grinder/Stand Combo	•	•			•	•	•
9682086	10" Grinder/Stand Combo	•	•			•	•	•
9682115	6" Grinder/Stand Combo	•	•			•	•	•
9682116	8" Grinder/Stand Combo	•	•			•	•	•
9682117	10" Grinder/Stand Combo	•	•			•	•	•
9682070	6" Grinder with Dust Collection Stand Combo	•	•			•	•	•
9682079	8" Grinder with Dust Collection Stand Combo	•	•			•	•	•
9682085	10" Grinder with Dust Collection Stand Combo	•	•			•	•	•

MATERIAL REMOVAL			DUST PORT	TYPE OF FINISHING OPERATION													MACHINE OPERATION							ACCESSORIES		
Light Stock Removal	Medium Stock Removal	Heavy Stock Removal	Dust Collection	Roughing	Shaping	Contouring	Flat Grinding	Angle Grinding	Deburring	Chamfering	Beveling	Edge Finishing	Sharpening	Cleaning	Buffing	Polishing	Grinding Wheel	Wire Wheel	Non-Woven Abrasive Wheel	Buffing/Polishing Wheel	Abrasive Belt	Abrasive Disc	Flap Wheel	1/4" Shank Accessories	1/8" Shank Accessories	Polishing Stones
•	•		NO	•	•		•	•	•	•		•		•			•	•	•							
•	•		YES	•	•		•	•	•	•		•		•			•	•	•							
•	•		YES	•	•		•	•	•	•		•		•			•	•	•							
•	•	•	YES	•	•		•	•	•	•		•		•			•	•	•							
•	•	•	YES	•	•		•	•	•	•		•		•			•	•	•							
•	•	•	YES	•	•		•	•	•	•		•		•			•	•	•							
•	•	•	YES	•	•		•	•	•	•		•		•			•	•	•							
•	•	•	YES	•	•		•	•	•	•		•		•			•	•	•							
			YES	•	•		•							•			•	•	•							
			YES	•	•		•							•			•	•	•							
			YES	•	•		•							•			•	•	•							
			YES	•	•		•							•			•	•	•							
			YES	•	•		•							•			•	•	•							
			YES	•	•		•							•			•	•	•							
			YES	•	•		•							•			•	•	•							
			YES	•	•		•							•			•	•	•							
			YES	•	•		•							•			•	•	•							
			YES	•	•		•							•			•	•	•							
			YES	•	•		•							•			•	•	•							
			YES	•	•		•							•			•	•	•							
			YES	•	•		•							•			•	•	•							
			YES	•	•		•							•			•	•	•							
			YES	•	•		•							•			•	•	•							
			YES	•	•		•							•			•	•	•							
			YES	•	•		•							•			•	•	•							
			YES	•	•		•							•			•	•	•							
			YES	•	•		•							•			•	•	•							
			YES	•	•		•							•			•	•	•							
			YES	•	•		•							•			•	•	•							
			YES	•	•		•							•			•	•	•							
			YES	•	•		•							•			•	•	•							
			YES	•	•		•							•			•	•	•							
			YES	•	•		•							•			•	•	•							
			YES	•	•		•							•			•	•	•							
			YES	•	•		•							•			•	•	•							
			YES	•	•		•							•			•	•	•							
			YES	•	•		•							•			•	•	•							
			YES	•	•		•							•			•	•	•							
			YES	•	•		•							•			•	•	•							
			YES	•	•		•							•			•	•	•							
			YES	•	•		•							•			•	•	•							
			YES	•	•		•							•			•	•	•							
			YES	•	•		•							•			•	•	•							
			YES	•	•		•							•			•	•	•							
			YES	•	•		•							•			•	•	•							
			YES	•	•		•							•			•	•	•							
			YES	•	•		•							•			•	•	•							
			YES	•	•		•							•			•	•	•							
			YES	•	•		•							•			•	•	•							
			YES	•	•		•							•			•	•	•							
			YES	•	•		•							•			•	•	•							
			YES	•	•		•							•			•	•	•							
			YES	•	•		•							•			•	•	•							
			YES	•	•		•							•			•	•	•							
			YES	•	•		•							•			•	•	•							
			YES	•	•		•							•			•	•	•							
			YES	•	•		•							•			•	•	•							
			YES	•	•		•							•			•	•	•							
			YES	•	•		•							•			•	•	•							
			YES	•	•		•							•			•	•	•							
			YES	•	•		•							•			•	•	•							
			YES	•	•		•							•			•	•	•							
			YES	•	•		•							•			•	•	•							
			YES	•	•		•							•			•	•	•							
			YES	•	•		•							•			•	•	•							
			YES	•	•		•							•			•	•	•							
			YES	•	•		•							•			•	•	•							
			YES	•	•		•							•			•	•	•							
			YES	•	•		•							•			•	•	•							
			YES	•	•		•							•			•	•	•							
			YES	•	•		•							•			•	•	•							
			YES	•	•		•							•			•	•	•							
			YES	•	•		•							•			•	•	•							
			YES	•	•		•							•			•	•	•							
			YES	•	•		•							•			•	•	•							
			YES	•	•		•							•			•	•	•							
			YES	•	•		•							•			•	•	•							
			YES	•	•		•							•			•	•	•							
			YES	•	•		•							•			•	•	•							
			YES	•	•		•							•			•	•	•							
			YES	•	•		•							•			•	•	•							
			YES	•	•		•							•			•	•	•							
			YES	•	•		•							•			•	•	•							
			YES	•	•		•							•			•	•	•							
			YES	•	•		•							•			•	•	•							
			YES	•	•		•							•			•	•	•							
			YES	•	•		•							•			•	•	•							
			YES	•	•		•							•			•	•	•							
			YES	•	•		•							•			•	•	•							
			YES	•	•		•							•			•	•	•							
			YES	•	•		•							•			•	•	•							
			YES	•	•		•							•			•	•	•							
			YES	•	•		•							•			•	•	•							
			YES	•	•		•							•			•	•</								

continued on next page

continued from previous page

Versatility is a major advantage as most machines can be converted from medium to heavy stock removal to finishing operations.

To optimize performance with your finishing machine the chart below is a helpful tool to assist you in identifying the model of finishing machine that works best to fit your specific application.

Abrasive finishing can be divided into four broad categories:

- Roughing or Coarse Grinding - removes excess material or imperfections from the workpiece in preparation for subsequent finishing operations.
- Intermediate Grinding or Blending - bringing the workpiece to a predetermined size or shape from a "as formed" condition or following a roughing operation.
- Final Finishing and Polishing - bringing the workpiece to the surface finish required for buffing, plating, bluing or other surface treatments or coatings.
- Precision Sizing & Finishing - surface finish refinement product in high quality flat surfaces with close tolerance control

TYPE OF MATERIALS TO BE FINISHED							WORKPIECE SIZE		
Ferrous Metals	Non-Ferrous Metals	Wood	Plastic	Carbide	Composites		Small Parts	Medium Parts	Large Parts
9682112	6" Grinder with Dust Collection Stand Combo	•	•				•	•	•
9682113	8" Grinder with Dust Collection Stand Combo	•	•				•	•	•
9682114	10" Grind with Dust Collection Stand Combo	•	•				•	•	•
9682063	6", 1/2HP, 1PH buffer	•	•				•	•	
9682083	8", 3/4HP, 1PH buffer	•	•				•	•	•
9682106	6" 3/4HP, PowerGrind-XP Variable Speed Buffer	•	•				•	•	
9682107	8", 1HP, PowerGrind-XP Variable Speed Buffer	•	•				•	•	
9682108	10", 1-1/2HP PowerGrind-XP Variable Speed Buffer	•	•				•	•	•
9682091	6" Buffer 1750 RPM 1/4HP	•	•				•	•	•
9682094	12" 6HP, 2-Speed Dual Head Polishing Lathe	•	•				•	•	•
9682095	16" 7-1/2 HP, 2-Speed Dual Head Polishing Lathe	•	•				•	•	•
9682910	0.8HP Drill Sharpener	•			•				
9682906	Drill Bit Sharpener	•			•				
9681312	12" Disc Abrasive Finishing Machine	•	•	•	•	•	•	•	
9681318	12" Disc Sander With Stand	•	•	•	•	•	•	•	
9681314	16" Abrasive Finishing Machine	•	•	•	•	•	•	•	
9681315	20" Disc Abrasive Finishing Machine	•	•	•	•	•	•	•	•
9681316	20" Disc Abrasive Finishing Machine	•	•	•	•	•	•	•	•
9681317	20" Disc Abrasive Finishing Machine	•	•	•	•	•	•	•	•
9682401	1" x 42" Belt grinder / bench model	•	•		•	•	•	•	
9682402	2" x 48" Belt grinder / bench model	•	•		•	•	•	•	
9682404	4" x 36" Belt grinder / bench model	•	•		•	•	•	•	•
9682418	6" x 48" Belt Finishing Mach	•	•	•	•	•	•	•	•
9681120	6' x 48" Edge Sander	•	•	•	•	•	•	•	•
9681062	Combination 1" Belt & 8" Disc Machine	•	•	•	•	•	•	•	
9681061	Combination 2" Belt & 6" Disc Machine	•	•	•	•	•	•	•	
9681114	4" x 6" Belt & Disc Sander	•	•	•	•	•	•	•	
9681115	6" x 9" Belt & Disc Sander	•	•	•	•	•	•	•	
9681093	Combination 6" Belt & 9" Disc Machine	•	•	•	•	•	•	•	•
9681109	Combination 6" Belt & 10" Disc Machine	•	•	•	•	•	•	•	•
9681108	Combination 6" Belt & 14" Disc Machine	•	•	•	•	•	•	•	•
9682122	6" x 12" Bench Surface Grinder	•	•				•		
9650000	Electric Rotary Tool, Variable Speed W/ Collet Chuck	•	•	•	•	•	•	•	•

MATERIAL REMOVAL			DUST PORT	TYPE OF FINISHING OPERATION													MACHINE OPERATION							ACCESSORIES		
Light Stock Removal	Medium Stock Removal	Heavy Stock Removal	Dust Collection	Roughing	Shaping	Contouring	Flat Grinding	Angle Grinding	Deburring	Chamfering	Beveling	Edge Finishing	Sharpening	Cleaning	Buffing	Polishing	Grinding Wheel	Wire Wheel	Non-Woven Abrasive Wheel	Buffing/Polishing Wheel	Abrasive Belt	Abrasive Disc	Flap Wheel	1/4" Shank Accessories	1/8" Shank Accessories	Polishing Stones
•	•		YES	•	•	•	•	•	•	•	•	•		•			•		•							
•	•		YES	•	•	•	•	•	•	•	•	•		•			•		•							
•	•	•	YES	•	•	•	•	•	•	•	•	•		•			•		•							
•	•		NO											•	•	•			•	•			•			
•	•		NO											•	•	•			•	•			•			
			NO											•	•	•				•			•			
			NO											•	•	•				•			•			
			NO											•	•	•				•			•			
•	•		NO									•	•	•	•	•				•						
			YES											•	•	•				•			•			
			YES											•	•	•				•			•			
			NO											•	•	•	•	•								
			NO										•	•	•	•	•	•								
			YES	•	•	•	•	•	•	•	•			•								•				
			YES	•	•	•	•	•	•	•	•	•		•								•				
			YES	•	•	•	•	•	•	•	•	•		•								•				
			YES	•	•	•	•	•	•	•	•	•		•								•				
			YES	•	•	•	•	•	•	•	•	•		•								•				
			YES	•	•	•	•	•	•	•	•	•		•								•				
•	•		YES	•	•	•	•	•	•	•	•	•	•	•							•					
•	•		YES	•	•	•	•	•	•	•	•	•	•	•							•					
•	•	•	YES	•	•	•	•	•	•	•	•	•	•	•							•					
•	•		YES	•	•	•	•	•	•	•	•	•		•							•					
•	•		YES	•	•	•	•	•	•	•	•	•		•							•					
•	•		YES	•	•	•	•	•	•	•	•	•		•							•	•				
•	•		YES	•	•	•	•	•	•	•	•	•		•							•	•				
•	•		YES	•	•	•	•	•	•	•	•	•		•							•	•				
•	•		YES	•	•	•	•	•	•	•	•	•		•							•	•				
•	•	•	YES	•	•	•	•	•	•	•	•	•		•							•	•				
			NO		•		•										•									
•	•		NO	•	•	•	•	•	•	•	•	•		•	•	•									•	

HEAVY DUTY BENCH GRINDERS

Palmgren's bench grinders are designed and built with high-quality motors for heavy duty use and long duty cycles. Our stated horsepower is actual sustained horsepower under 100% loads with less than 1% loss from stated RPMs at same 100% loads.

Designed to do more, a Palmgren bench grinder provides you with 4 to 7 times longer duty cycles under load and 8 times less speed degradation than any other competitor.

Palmgren's line up of industrial grade bench grinders provide smooth, quiet power for all grinding, cleaning, deburring, chamfering and sharpening jobs. Designed to handle heavy stock removal to finishing applications these powerful units are built for continuous, efficient use all day, every day.

- Extended wheel-to-wheel clearance which allows longer items to be ground easily
- Dynamically balanced rotors and sealed bearings to minimize vibration and ensure smooth running
- Large adjustable tool rests for safe, efficient tilt and angle grinding
- Adjustable safety eye shields and spark guards easily positioned with hurricane bolts
- Exclusive single port dust collection system, on selected models
- Maximum performance, accuracy and value
- 9682061 comes with wheel guards with no dust collection ports
- 9682062 comes with wheel guards with dust collection ports
- 12" model comes standard with pedestal floor stand
- Units fit Item # 9670101 tool stands



9682061



9682082



9682101



POWERGRIND™

Item #	Wheel Diameter	Dust Collection	Face Wheel	Arbor Hole	Exhaust Port	Wheels C to C	Length	Height	HP	Voltage	Phase	Max RPM	Amps
9682061	6"	No	3/4"	1/2"	—	14-1/4"	18-1/2"	10"	1/3	120/240	1	3450	3.0/1.5
9682062	6"	Yes	3/4"	1/2"	2-1/2"	14-7/8"	19-1/4"	10-1/2"	1/3	120/240	1	3450	3.5/1.75
9682071	7"	Yes	1"	5/8"	2-1/2"	16-1/2"	21"	13"	1/2	120/240	1	3450	5.0/2.5
9682081	8"	Yes	1"	5/8"	2-1/2"	16-1/2"	21"	13"	3/4	120/240	1	3450	7.0/3.5
9682082	8"	Yes	1"	5/8"	2-1/2"	16-1/2"	21"	13"	3/4	220/440	3	3450	2.2/1.1
9682101	10"	Yes	1"	1"	2-1/2"	20"	24"	16"	1	120/240	1	1725	10.0/5.0
9682102	10"	Yes	1"	1"	2-1/2"	20"	24"	16"	1	220/440	3	1725	3.3/1.7
9682121	12"	Yes	2"	1-1/4"	2-1/2"	21-3/4"	23"	50-1/2"	2	220	1	1725	10.0

HEAVY DUTY BENCH GRINDERS

Palmgren's POWERGRIND-XP™ are the next generation in bench grinders. They provide more horsepower, torque and value added features delivering high productivity grinding solutions. A cut above the rest POWERGRIND-XP industrial grade bench grinders provide smooth, quiet power for all your bench top grinding and finishing needs.

- Industrial grade capacitor motors
- Dynamically balanced rotors and sealed bearings to minimize vibration and ensure smooth running
- Extended wheel-to-wheel clearance which allows longer items to be ground and finished easily
- Large adjustable tool rests easily adjusted with hurricane bolts for safe, accurate grinding
- Comes with three tool rests – (2) standard flat top and (1) V-grooved top for sharpening drill bits with 118° drill point angle and 6" and 8" bench grinders include a wheel dresser
- 36 and 120 grit grinding wheels
- Exclusive single port dust collection system with coated steel hose
- Adjustable spark guards and safety eye shields – easily positioned with hurricane bolts
- Units fit Item # 9670101 tool stands



9682072



9682073



9682075



Stand included only with 12"

9682077

POWERGRIND-XP™

Item #	Wheel Diameter	Dust Collection	Face Wheel	Arbor Hole	Exhaust Port	Wheels C to C	Length	Height	HP	Voltage	Phase	Max RPM	Amps
9682072	6"	Yes	3/4"	1/2"	2-1/2"	14-7/8"	19-1/4"	10-1/2"	1/2	115/230	1	3600	5.5/2.8
9682073	8"	Yes	1"	5/8"	2-1/2"	16-1/2"	21"	13"	1	115/230	1	3600	10/5
9682074	8"	Yes	1"	5/8"	2-1/2"	16-1/2"	21"	13"	1	230/460	3	3600	3.2/1.6
9682075	10"	Yes	1"	1"	2-1/2"	20"	24"	16"	1.5	115/230	1	1800	15/7.5
9682076	10"	Yes	1"	1"	2-1/2"	20"	24"	16"	1.75	230/460	3	1725	6/3
9682077	12"	Yes	2"	1-1/4"	2-1/2"	21-3/4"	23"	50-1/2"	3	230/460	3	1725	7.8/4.0

VARIABLE SPEED BENCH GRINDERS

Palmgren's line up of deluxe variable speed bench grinders deliver the power, precision and versatility to handle a wide range of finishing applications. At maximum rpm's they are built for heavy material removal, deburring and chamfering applications. At the lower rpm range they effectively handle the more delicate cleaning, polishing, sharpening and other finishing operations.

- Equipped with the latest technology variable speed inverter delivering a broad range of continuous speeds to fit any application
- Powerful, heavy-duty capacitor motors provide additional torque and provide plenty of power at all speeds without any loss of rpm's at full load
- LED speed readout with "soft" touch on/off and variable speed control pad
- 3 hard speed switch settings 900 / 1800 / 3600 RPM for the 6" & 8" models and 900 / 1800 / 2400 RPM for the 10" model. Press the high or low switch button on touch pad to variably adjust the speed up or down in 100 RPM increments
- Dynamically balanced rotors and sealed bearings to minimize vibration and ensure smooth running operation
- Extended wheel to wheel clearance
- Large adjustable tool rests
- Adjustable safety eye shields and spark guards
- Exclusive single port dust collection
- Units fit Item # 9670101 tool stands



POWERGRIND-XP™



9682096



9682097



9682098

Item #	Wheel Diameter	Dust Collection	Face Wheel	Arbor Hole	Exhaust Port	Wheels C to C	Length	Height	HP	Voltage	Phase	RPM	Amps
9682096	6"	Yes	3/4"	1/2"	2-1/2"	14-7/8"	19-1/4"	10-1/2"	1/2	115/230	1	900 - 3600	3/1.5
9682097	8"	Yes	1"	5/8"	2-1/2"	16-1/2"	21"	13"	1	115/230	1	900 - 3600	6/3
9682098	10"	Yes	1"	1"	2-1/2"	20"	24"	16"	1.5	115/230	1	900 - 2400	7/3.5

6" LOW SPEED BENCH GRINDER

Palmgren's 6" heavy duty, low RPM, bench grinder is perfect for all of your edge sharpening needs. With its high-quality motor and cast-iron design, this grinder can be used in even the longest duty cycles. Our stated horsepower is the sustained horsepower when the grinder is under 100% loads. Designed for applications from heavy stock removal to fine finishing applications, this powerful grinder is built for continuous, efficient use all day, every day.

- Dynamically balanced rotors and sealed bearings to minimize vibration and ensure smooth running
- Large adjustable tool rests for safe, efficient tilt and angle grinding
- Adjustable safety eye shields and spark guards easily positioned with hurricane bolts
- Extended wheel-to-wheel clearance which allows for longer items to be ground easily
- 1,750 RPM motor allows for simple edge sharpening
- Unit fits on 9670101 and 9670100 tool stands



9682090



Item #	Wheel Diameter	Dust Collection	Face Wheel	Arbor Hole	Exhaust Port	Wheels C to C	Length	Height	HP	Voltage	Phase	RPM	Amps
9682090	6"	Yes	3/4"	1/2"	2-1/2"	14-1/2"	19"	11"	1/4	120V	1	1750	2.5

COMBINATION HEAVY DUTY BENCH GRINDER & BUFFER

Palmgren's heavy duty bench grinder and buffer machine is designed to handle heavy stock removal to finishing and polishing operations. These grinder/ buffers come with capacitor motors to supply the extra current required during start up and operation under load.

- Available in 6" (1/3 HP) and 8" (3/4 HP) sizes
- Dynamically balanced rotors and sealed bearings minimize vibration and ensure smooth running
- OSHA compliant wheel guards for all grinding wheel and wire brush operations
- Open flanged shaft for all your buffing and polishing applications
- Wheel guard with dust collection port on 8" model
- Includes 36 grit grinding wheel, 0.014" wire wheel, one wheel guard and tool rest, spiral cotton buffing wheel and mounting spacers
- Units fit Item # 9670101 tool stands

POWERGRIND™



Item #	Grinder Buffer	Dust Collection	Face Wheel	Arbor Hole	Exhaust Port	Wheels C to C	Buffer Width Min. - Max.	Length	Height	HP	Voltage	Max RPM	Amps
9682068	6"	No	3/4"	1/2"	—	14-1/4"	1/4" - 1-1/8"	18-1/2"	10"	1/3	115/230	3450	3.5/1.75
9682069	8"	Yes	1"	5/8"	2-1/2"	16-3/8"	1/4" - 2"	21"	13"	3/4	115/230	3450	7/3.5

COMBINATION BENCH & BELT GRINDER

Palmgren combined two machines into one. Ideal for grinding, deburring, polishing and finishing all types of parts, on any type of material. With such versatile capabilities this combination grinder eliminates the need for a number of different machines. Built with a powerful capacitor motor for use all day, every day.

- Dynamically balanced rotor and sealed bearings minimize vibration and ensure accuracy
- Front mounted safety on/off switch
- Adjustable work rests
- Dust collection ports
- Belt is adjustable in either the vertical or horizontal position or any position in-between
- Unit fits Item # 9670101 tool stands



Item #	HP	Volts	Amps AC	Belt Size	Belt SFPM	Wheel Diameter	Wheel Face Diameter	Wheel Speed (RPM)	Arbor Hole	Depth	Width	Height
9682088	3/4	120/240	7.0/3.5	2" x 48"	4500	8"	1"	3450	5/8"	21"	14"	26"

BENCH GRINDERS WITH WIRE WHEEL

Palmgren's line up of industrial grade bench grinders provide smooth, quiet power for all grinding, cleaning, deburring, chamfering and sharpening jobs. Designed to handle heavy stock removal to finishing applications these powerful units are built for continuous, efficient use all day, every day.

- Dynamically balanced rotors and sealed bearings to minimize vibration and ensure smooth running
- Large adjustable tool rests for safe, efficient tilt and angle grinding
- Adjustable safety eye shields and spark guards easily positioned with hurricane bolts
- Exclusive single port dust collection system, on selected models
- Includes wheel guards with dust collection ports



OSHA
COMPLIANT

Item #	Wheel Diameter	Dust Collection	Face Wheel	Arbor Hole	Exhaust Port	Wheels C to C	Length	Height	HP	Voltage	Phase	RPM	Amps
9682058	6"	Yes	3/4"	1/2"	2-1/2"	14-7/8"	19-1/4"	10-1/2"	1/3	115/230	1	3450	3.5/1.75
9682059	8"	Yes	1"	5/8"	2-1/2"	16-1/2"	21"	13"	3/4	120/240	1	3450	7.0/3.5



ECONOMY BENCH GRINDERS

Palmgren bench grinders are a staple in every garage or shop. They provide smooth quiet power for all grinding, cleaning, deburring, chamfering and sharpening jobs. Dynamically balanced rotors and sealed bearings minimize vibration and ensure smooth running. The flex lamp with an independent switch allows for set up with the wheels running.

- 8" Variable speed unit operates from 2000 to 3450 RPM
- Flexible lamps with independent switch (40W bulb not included)
- Eyeshields, spark arrestors and adjustable tool rests included
- 6" Single speed grinder includes 2 abrasive wheels, 36 & 60 grit
- 8" grinder includes a 60 grit abrasive wheel and a 8" crimped wire wheel

ITEM# 9682060 - 6" - Dimensions: 10"D x 13"W x 13"H

ITEM# 9682080 - 8" - Dimensions: 10"D x 16"W x 16"H

Item #	Motor	Wheel Diameter	Grit	Face	Arbor Hole	Max RPM	Wheels C-C	Weight
9682060	1/3 HP 120V 2.1A 60Hz	6"	36 & 60	3/4"	1/2"	3450	13"	21 lbs.
9682080	1/2 HP 120V 5.0A 60Hz	8"	60 & Wire Wheel	1"	5/8"	2000-3400	16"	38 lbs.



HEAVY DUTY BENCH GRINDER COMBOS

- Industrial grade capacitor motors
- Large adjustable tool rests easily adjusted with hurricane bolts for safe, accurate grinding
- Exclusive single port dust collection system with coated steel hose
- Adjustable spark guards and safety eye shields – easily positioned with hurricane bolts



Item #	With XP Grinder	Overall Dimensions	Weight
9682066	6" - 9682072	19-1/4" x 10-1/2" x 43-1/2"	73 lbs.
9682078	8" - 9682073	21" x 13" x 46"	103 lbs.
9682086	10" - 9682075	24" x 16" x 49"	145 lbs.

Item #	With Variable Speed Grinder	Overall Dimensions	Weight
9682115	6" - 9682096	19-1/4" x 10-1/2" x 43-1/2"	73 lbs.
9682116	8" - 9682097	21" x 13" x 46"	103 lbs.
9682117	10" - 9682098	24" x 16" x 49"	145 lbs.

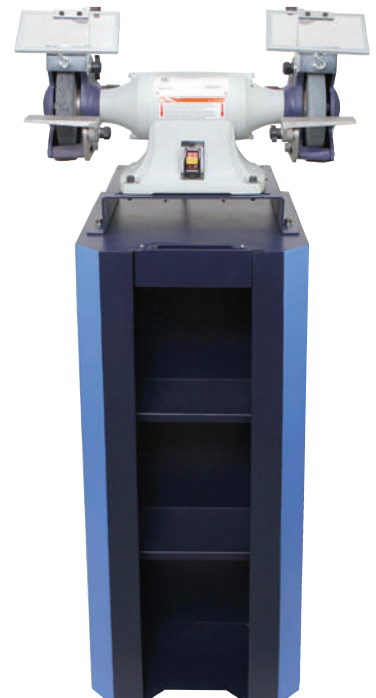
POWERGRIND-XP™

POWERGRIND-XP™ FINISHING COMBOS WITH DUST COLLECTION

- Industrial grade capacitor motors
- Dynamically balanced rotors and sealed bearings to minimize vibration and ensure smooth running
- Extended wheel-to-wheel clearance which allows longer items to be ground and finished easily
- Large adjustable tool rests easily adjusted with hurricane bolts for safe, accurate grinding
- Comes with three tool rests – (2) standard flat top and (1) V-grooved top for sharpening drill bits with 118° drill point angle and 6" and 8" bench grinders include a wheel dresser
- Exclusive single port dust collection system with coated steel hose

Item #	With XP Grinder	Dust Collection HP	CFM	Port Size	Dust Container Volume	Overall Dimensions	Weight
9682070	6" - 9682072	1.5HP	472	2-3/8"	110 Cubic Inches	19-1/4" x 21-1/2" x 42-1/2"	130 lbs.
9682079	8" - 9682073	1.5HP	472	2-3/8"	110 Cubic Inches	21" x 21-1/2" x 45"	161 lbs.
9682085	10" - 9682075	1.5HP	472	2-3/8"	110 Cubic Inches	24" x 21-1/2" x 48"	203 lbs.

Item #	With Variable Speed Grinder	Dust Collection HP	CFM	Port Size	Dust Container Volume	Overall Dimensions	Weight
9682112	6" - 9682096	1.5HP	472	2-3/8"	110 Cubic Inches	19-1/4" x 21-1/2" x 42-1/2"	130 lbs.
9682113	8" - 9682097	1.5HP	472	2-3/8"	110 Cubic Inches	21" x 21-1/2" x 45"	161 lbs.
9682114	10" - 9682098	1.5HP	472	2-3/8"	110 Cubic Inches	24" x 21-1/2" x 48"	203 lbs.



BUFFERS

Palmgren's buffing machines easily remove scratches and other imperfections, bring out the natural luster of the metal and can effectively clean, finish, polish and buff a wide variety of materials. Each unit is equipped with a strong, powerful motor that supplies the necessary torque for start-up and operation under load.

- Large diameter armature shaft with shielded bearings for smooth operation
- Heavy duty cast iron construction for vibration free operation
- Units fit 9670101 heavy duty tool stand, see below



POWERGRIND™



9682063



9682083

Item #	HP	RPM	Shaft Diameter	Amps	Voltage	Wheel Size
9682063	1/2	3450	1/2"	5.0	120	6"
9682083	3/4	3450	5/8"	5.0/2.5	120/240	8"



BUFFER GUARDS

- Heavy steel construction
- Easily mounts to endshields of buffer
- Left or right side wheel operation
- Swivel hood for maximum coverage but still provides plenty of buffing wheel work surface
- 1-1/2" Dust Port extends from rear panel for connection to dust collection system
- Helps minimize flying parts and buffing compound dust

Item # 9682099 – Buffer Guard for 6" & 8" Buffers

Item # 9682100 – Buffer Guard for 10" Buffers

VARIABLE SPEED BUFFERS

Palmgren's line up of deluxe variable speed buffers delivers the power, precision and versatility to handle a wide range of finishing applications. At maximum rpm's they are built for intermediate blending, polishing and surface conditioning applications. At the lower rpm range they effectively handle the more delicate final finishing, polishing, buffing and surface finish refinement operations.

- Equipped with the latest technology variable speed inverter delivering a broad range of continuous speeds to fit any application
- Powerful, heavy-duty capacitor motors provide additional torque and provide plenty of power at all speeds without any loss of rpm's at full load
- LED speed readout with "soft" touch on/off and variable speed control pad
- 3 hard speed switch settings 900 / 1800 / 3600 RPM for the 6" and 8" models and 900 / 1800 / 3000 RPM for the 10" model. Press the high or low switch button on touch pad to variably adjust the speed up or down in 100 RPM increments from the hard rpm setting
- Dynamically balanced rotors and sealed bearings to minimize vibration and ensure smooth running operation
- Extended wheel to wheel clearance
- Units fit Item # 9670101



9682106



9682108

Item #	Wheel Diameter	HP	Voltage	Amps	RPM	Shaft Diameter
9682106	6"	3/4	115/240	7/3.5	900 - 3600	1/2"
9682107	8"	1	115/240	12/6	900 - 3600	5/8"
9682108	10"	1.5	115/240	14/7	900 - 3000	1"

POWERGRIND-XP™  

6" LOW SPEED BUFFERS

Palmgren's low speed buffing machine is the perfect buffer to remove scratches and other imperfections in any material. With lower buffing speeds this machine can effectively handle the more delicate finishing, polishing and buffing operations. Every buffer is equipped with a powerful motor that supplies the necessary torque for start up and operation under load.

- 1,750 RPM speeds allow for fine finishing applications
- Large diameter armature shaft with shielded bearings for smooth operation
- Heavy-duty cast-iron construction for vibration free operation
- Unit fits on 9670101 and 9670100 tool stands



Item #	Wheel Diameter	HP	Voltage	Amps	RPM	Shaft Diameter
9682091	6"	1/4	120V	2.5	1750	1/2"

12" 2-SPEED DUAL HEAD BUFFER / POLISHING LATHE

Palmgren's 12" 2-speed buffer provides fast and effective deburring, finishing, graining, surface conditioning, polishing and buffing. It can easily remove scratches and imperfections, bringing out the natural luster of the metal. Designed to run convolute wheels, wire wheels, flap wheels, nylon wheels, fiber or bristle-brush wheels as well as buffing and polishing wheels. This buffer/polishing lathe will handle the most demanding polishing applications as well as fine detailing work.



- Direct drive power train with rugged oversized threaded nickel chromed shaft
- Production duty 2 speed motor
- Reliable oversized ball bearings, fully shrouded and sealed for extended life
- Plenty of room between the wheels to accommodate a wide variety of parts simply and quickly
- Versatility is enhanced by narrow and wide wheel capability with a wheel clamping range that allows the mixing and matching from narrow to wide wheels of different sizes and types
- Set of wheel spacers and washers
- Cleanliness maximized by adjustable wheel covers with integrated 3" dust port
- Safety eye guards
- Safety electrical system, white power on light, green machine running light, 2-speed hi/low drum switch, on/off power push button power switch with keyed lock-out, emergency stop push button with electronic brake and 24 volts at all switches
- Heavy duty steel floor stand with hinged door, internal storage and anti-vibration foot pads

Dimensions:

Item 9682094: 23.62" L x 41.33" W x 43.30" H



Item #	Size	Horse Power	Volts	Phase	Amps	Motor Speed (RPM)	Arbor Size	Wheel Size	Wheel Thickness Stack	Weight (Lbs)
9682094	12"	6	230	3	18.6	1750 & 3500	1 3/8"	12"	3/4", 3.5", 7"	230

16" 2-SPEED DUAL HEAD BUFFER / POLISHING LATHE

Palmgren's 16" 2-speed buffer provides fast and effective deburring, finishing, graining, surface conditioning, polishing and buffing. It can easily remove scratches and imperfections, bringing out the natural luster of the metal. Designed to run convolute wheels, wire wheels, flap wheels, nylon wheels, fiber or bristle-brush wheels as well as buffing and polishing wheels. This buffer/polishing lathe will handle the most demanding polishing applications as well as fine detailing work.

- Direct drive power train with rugged oversized threaded nickel chromed shaft
- Production duty 2 speed motor
- Reliable oversized ball bearings, fully shrouded and sealed for extended life
- Plenty of room between the wheels to accommodate a wide variety of parts simply and quickly
- Versatility is enhanced by narrow and wide wheel capability with a wheel clamping range that allows the mixing and matching from narrow to wide wheels of different sizes and types
- Set of wheel spacers and washers
- Cleanliness maximized by adjustable wheel covers with integrated 3" dust port
- Safety eye guards
- Safety electrical system, white power on light, green machine running light, 2-speed hi/low drum switch, on/off power push button power switch with keyed lock-out, emergency stop push button with electronic brake and 24 volts at all switches
- Heavy duty steel floor stand with hinged door, internal storage and anti-vibration foot pads

Dimensions:

Item 9682095: 67" L x 21.25" W x 47.25" H



Item #	Size	Horse Power	Volts	Phase	Amps	Motor Speed (RPM)	Arbor Size	Wheel Size	Wheel Thickness Stack	Weight (Lbs)
9682095	16"	7.5	230	3	18.6	1750 & 3500	1 3/8"	16"	1", 1.5", 3.5"	585

DRILL BIT SHARPENER

Palmgren's small drill sharpener adds versatility with adjustable chisel and relief angles, and the ability to create and sharpen split point bits. Even the smallest shops can economically sharpen their own drills in real time. You can accurately sharpen a dull drill bit in under a minute. This economical precision sharpener operates quickly and intuitively.



- Sharpens standard twist and masonry bits from 7/72" to 1/2"
- Sharpens to a 118 degree point angle
- Designed and engineered to sharpen three of the most common drill bit types - standard point, split point and masonry bits
- Sharpens Carbide, Cobalt, High-Speed Steel, Black Oxide, TiN-Coated twist and masonry bits
- Most efficient when used to resharpen a drill bits original point angle
- Easy to replace diamond sharpening wheel

Item # 9682906

SPECIFICATIONS:

Motor power:

Voltage: 115V / 60 Hz / 1 PH

Speed: 4200 RPM

Dimensions: 8-5/8" L x 7-7/8" W x 6-5/16"x H

Weight: 6 lbs.



OPTIONAL ACCESSORIES:

Item # 9639708.01

80 W Replacement diamond grinding wheel

THREE SIMPLE STEPS FOR SHARPENING



ADJUSTMENT OF THE DRILL BIT

Take the chuck and insert it into the alignment hole guide. Open the chuck by turning left and insert the drill bit into the chuck. Press the alignment button to open the adjustable jaws and then the drill bit can be advanced until it stops. Release slowly the alignment button till the chuck jaws firmly grasp the drill bit, then turn the chuck back to the right to tighten and secure the drill bit. You now have the drill properly positioned in the chuck for sharpening.



GRINDING OF THE DRILL BIT

Remove the drill chuck from the alignment port and position it into the sharpening port. Now turn the chuck with light pressure to the right & left till the noise from grinding significantly reduces. Take the chuck out of the port and rotate the chuck 180 degrees and repeat the grinding process. Always turn the machine off before removing the chuck.



REDUCING THE CHISEL EDGE / SPLIT POINT

Remove the drill chuck from the alignment port and position it into the split point port. Now turn the chuck with light pressure to the right & left till the noise from grinding significantly reduces. Take the chuck out of the port and rotate the chuck 180 degrees and repeat the grinding process. Always turn the machine off before removing the chuck.

DRILL SHARPENER

For drill sharpening the Palmgren Drill Sharpener is designed for precision, efficient easy operation and has the flexibility required to sharpen the largest range of dull or broken drill bits including split points and masonry bits from 1/8" to 3/4".

Easy to use the drill bits are securely held in a prismatic vise for precise centering of the bit to the grinding wheel and very exact repeat accuracy. This design lets you grind a wide range of drill point variations – you can even customize point angles and clearances to achieve the most efficient feed rates to match your specific applications. Sharpens high speed steel, carbide, cobalt, TIN-coated and masonry bits with a drill bit capacity of 1/8" to 3/4", with an angle range of 90 to 150 degrees and relief angles of 0 to 20 degrees and drill point concentricity of .001" lip to lip.

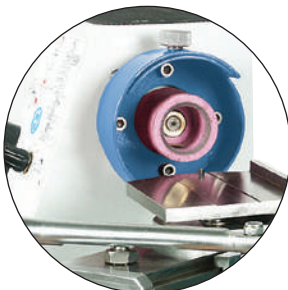
The unit is constructed of cast iron and steel providing a rugged vibration free foundation and comes standard with cup grinding wheel, built in diamond wheel dresser, powerful 600W motor, broad infinitely variable speed range, magnetic switch with lockable emergency stop button and quench pot.

This unit is used to sharpen dull and broken drill bits extending their useful life and improving their performance.

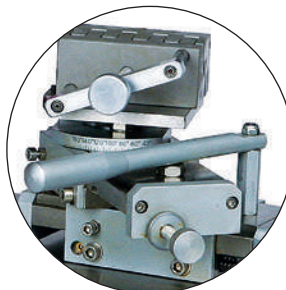


OPTIONAL ACCESSORIES:
[Item #9639709.01](#)
Replacement cup wheel

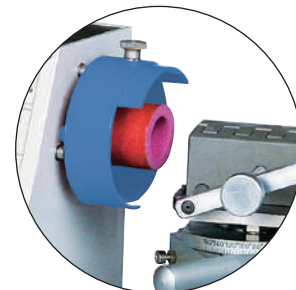
Item #	HP	Voltage	Amps AC	Speed RPM	Cup Wheel Outside Ø	Cup Wheel Inside Ø	Cup Wheel Thread Ø	Depth of the Cup Wheel	Length	Width	Height
9682910	.80	115V	11	1680 - 9120	40 mm / 1.575"	26 mm / 1.024"	M 10 / .3425"	22 mm / .866"	8.858"	19.291"	9.449"



Cup wheel
Self-trimming
Runs dry



Prismatic vise
Solid
For exact centering and
safe fixturing



Wide grinding range
Twist drills from
1/8" - 3/4"

12" DISC ABRASIVE FINISHING MACHINE

Palmgren's heavy duty cast construction 12" disc abrasive finishing machine is ideal for finishing outside radius of metal, wood, plastics and composite materials.

- Direct drive
- 45° tilting table
- Miter gauge
- Balanced disc
- Dust collection port
- Abrasive wheel brake



Item #	HP	Voltage	Disc. Dia.	Speed (RPM)	Table Size	Table Tilt	Dust Port	Depth	Width	Height
9681312	3/4	120	12"	1720	17-1/4 x 8-3/8	45°	2"	17"	17-1/4"	14-3/8"



12" DISC ABRASIVE FINISHING MACHINE

Palmgren's heavy duty cast construction 12" disc abrasive finishing machine is ideal for finishing outside radius of metal, wood, plastics and composite materials.

- Direct drive
- 45° tilting table
- Miter gauge
- Balanced disc
- Dust collection port
- Abrasive wheel brake
- Heavy duty steel floor stand with 2 slots in column for spare grinding wheels



Item #	HP	Voltage	Disc. Dia.	Speed (RPM)	Table Size	Table Tilt	Dust Port	Depth	Width	Height
9681318	3/4	120	12"	1720	17-1/4 x 8-3/8	45°	2"	17"	17-1/4"	14-3/8"

16" DISC ABRASIVE FINISHING MACHINE

Palmgren's 16" high performance disc finishing machine is built to handle general purpose to precision finishing applications. Small, medium to large parts are finished fast and effectively. The increased area of contact improves stock removal and finish on all types and sizes of workpieces.

- Production duty motor effectively finishes all types of materials
- Direct drive design with oversized drive shaft and sealed bearings
- Adjustable disc guarding
- Adjustable table - adjusts up and down and angles for precision finishing of both plain and compound miters
- Safety electrical system: power on light, drum start/stop/forward/reverse switch, on/off push button power switch with keyed lock-out, emergency stop button with electronic brake and 24 volts at all switches
- 4" dust collection port
- Fully machined and balanced disc runs true and vibration free
- Disc is mounted directly to an oversized motor shaft for maximum power and efficiency
- Precise and ideal for all sizes of workpieces
- Can grind, deburr, contour and finish workpieces made of metal, wood or plastics
- Heavy duty steel floor stand with hinged door for internal storage



OSHA
COMPLIANT

Item #	DiscDia. (In.)	HP	Voltage & Phase	Amps AC	Disc Speed (RPM)	Disc Table Size (In.)	Disc Table Tilt-In Angle (Deg.)	Disc Table Tilt-Out Angle (Deg.)	Dust Collection Port Size (In.)	Weight
9681314	16	1.5	115V / 1PH	12.5	1720	18.5 x 8.5	5°	45°	4	266.76 lbs.

20" DISC FINISHING MACHINE

Palmgren's 20" high performance disc finishing machines are built to handle general purpose to precision finishing applications. Medium to large parts are finished fast and effectively. The increased area of contact improves stock removal and finish on all types and sizes of workpieces.

- Production duty motor effectively finishes all types of materials
- Direct drive design with oversized drive shaft and sealed bearings
- Adjustable disc guarding
- Adjustable table- adjusts up and down, and angles for precision finishing of both plain and compound miters
- Safety electrical system: drum start/stop/forward/reverse switch, on/off push button power switch with keyed lock-out, emergency stop button with electronic brake and 24 volts at all switches
- Fully machined and balanced disc runs true and vibration free
- Disc is mounted directly to an oversized motor shaft for maximum power and efficiency
- Precise and ideal for all sizes of workpieces
- Can grind, deburr, contour, and finish workpieces made of metal, wood, or plastics.
- Heavy duty steel floor stand with hinged door for internal storage



Item #	Phase	Voltage	Amps AC	HP	Speed (RPM)	Table Size	Table Tilt	Dust Port	Overall Dimensions	Weight
9681315	1PH	220V	11.2	2	1720	22-1/2" x 8-3/4"	-5 to +45°	4"	28" x 28" x 46"	313.5 lbs.
9681316	3PH	220V	9.1	3	1720	22-1/2" x 8-3/4"	-5 to +45°	4"	28" x 28" x 46"	313.5 lbs.
9681317	3PH	440V	5.2	3	1720	22-1/2" x 8-3/4"	-5 to +45°	4"	28" x 28" x 46"	313.5 lbs.

BELT GRINDERS

Palmgren's belt grinders are ideal power tools for all shops. These versatile machines grind, sand, finish, polish, deburr and contour all types of parts on any type of material. Built with a powerful capacitor motor for all day use.

- Belt is adjustable for use in either the vertical or horizontal position or any position in-between
- Front mounted on/off paddle switch
- Simple belt tensioning and adjustment
- Full belt guard
- 2" Dust collection port
- Units fit Item # 9670101 tool stands



POWERGRIND-XP™

Item #	Description	HP	Volts	Amps AC	Belt Size	Belt SFPM	Work Table Surface	Length	Width	Height	Weight
9682401	1" Belt Grinder	1/2	120/240	5.0/2.5	1" x 42"	1800	4-1/4" x 3"	22"	16"	24"	46 lbs.
9682402	2" Belt Grinder	3/4	120/240	7.0/3.5	2" x 48"	4500	4-1/4" x 3"	25"	16"	27"	60 lbs.
9682404	4" Belt Grinder	3/4	120/240	7.0/3.5	4" x 36"	3615	6-1/4" x 3"	19"	17"	24"	59 lbs.

6" X 48" BELT FINISHING MACHINE

Palmgren’s 6" x 48" Abrasive Belt Finishing Machine offers a combination of exceptional versatility and high efficiency. Designed around actual end user input; this differentiates our machine with meaningful features built around what the machine must do when it is in use to maximize user performance and safety. This 6" belt grinder can handle a multitude of jobs: contour part finishing, flat stock finishing, polishing, grinding and deburring, handling a variety of finishing operation.

- Powerful Direct drive power train
- Adjustable guarding
- Single dust collection port for easy connection and cleaning
- Cast iron tilting worktable with a slot for miter gauge and easy to read trunnions
- Deluxe miter gauge ideal for plain and compound angles
- Heavy duty fully enclosed steel stand with storage
- Safety lock out on/off switch
- Belt arm adjusts vertically, horizontally and any position in-between
- Upper idler drum supported on both sides with bearings
- Steel platen with replaceable graphite pad
- Advanced easy belt tracking
- Quick, easy belt changes
- Belt section mounted directly to the motor shaft



Belt arm adjusts vertically, horizontally and any position in-between



Item #	Description	HP	Volts	Phase	Amps AC	Belt Size	Belt SFPM	Belt Table Size	Dust Chute Size	Length	Width	Height	Weight
9682418	6" X 48" Belt Finishing Machine	1.5	115/230	1	12.6/6.3	6" x 48"	2258	8-5/8" x 6"	4"	23"	17"	52"	141 lbs.

HORIZONTAL VERTICAL
EDGE SANDER

The Palmgren edge sander help provide the perfect finish to long edge applications such as doors, cabinet doors, picture frames and molding. The sanding belt can be tilted from 0° to 90° with a simple lever adjustment. The table adjusts up and down to utilize the entire sanding belt width. A special table is included for sanding radial edges using the sanding belt drive drum.

- 6" x 48" Abrasive Belt
- Belt guard with dust port opens to allow radial sanding utilizing the drive drum
- Workstop included

ITEM# 9681120: Dimensions: 29"D x 26"W x 48"H



Includes table for sanding radial edges



Item #	Motor	Belt Size	Belt Speed SFPM	Tilt	Platen	Table Size	Table Adjustment	Dust Collection	Weight
9681120	3/4HP 120V 8.0A	6" x 48"	1950	0° to 90°	17" x 6"	17-1/4" x 10"	Up & Down	2-1/2"	98 lbs.

COMBINATION 2" X 6" BELT & DISC FINISHING MACHINE

Palmgren's direct drive combination belt and disc finishing machines grind, sand, finish, polish, deburr and contour all types of materials and parts. The direct drive power train with a heavy duty capacitor motor allows the units to work under load without slowing or bogging down.

- 2 x 42" belt with a 6" disc bench model
- Belt operates in the horizontal or vertical position and is designed for fast, easy belt changes
- Both the belt and disc come with a tilting work table. Disc table is slotted to accept the standard miter gauge
- Cast base for maximum rigidity
- 1-1/2" Dust Collection Port



Item #	HP	Volts	Amps AC	Disc Dia.	Disc Speed RPM	Belt Size	Belt SFPM	Disc Table Size (RPM)	Belt Table Size	Depth	Width	Height	Weight
9681061	1/3	120	3.5	6"	3500	2" x 42" or 1" x 42"	4400	5-1/2 x 8-1/4	6-3/4" x 9"	8"	14-1/2"	23"	35 lbs.



COMBINATION 1" X 8" BELT & DISC FINISHING MACHINE

This versatile power tool allows you to grind, sand, finish, polish, deburr and contour all types of parts and materials including metal, wood, plastic and composite materials. The sturdy cast construction with heavy duty steel base and rubber feet reduce vibration and excess noise delivering better finished workpieces which makes it a handy tool in a fabrication shop or wood working shop.

- 1" x 42" belt & 8" disc
- Cast iron tilting tables
- Deluxe miter gauge
- Simple fast belt changes and tracking
- Dust ports for easy dust collection and cleaning
- Removable platen allows for sanding, grinding or finishing of outside curves or odd shaped workpieces
- Hinged idler wheel cover allows for contour sanding or grinding
- Open narrow 1" band lets the abrasive belt do the work of a jig saw, coping saw or hand file which removing material and finishing at the same time

Item #	HP	Volts	Amps AC	Disc Dia.	Disc Speed RPM	Belt Size	Belt SFPM	Disc Table Size (RPM)	Belt Table Size	Depth	Width	Height	Weight
9681062	1/3	120V	5.8	8"	1750 RPM	1" x 42"	3000 SFPM	10" x 4"	10-1/2" x 6"	21"	14"	16"	63 lbs.

ECONOMY 4" X 6" BELT & DISC SANDER

Space saving 4" x 6" belt & disc sander fits almost anywhere in your shop. The 4" x 36" abrasive belt operates at 1900 SFPM for aggressive material removal. The belt arm can be adjusted anywhere from horizontal to vertical position depending on your work needs. The 6" disc includes a table for precise sanding of angles and miters or just for finish sanding of cuts.

- 1/2HP 120V motor easily operates off of household electrical
- Cast aluminum disc table tilts up to 45° for angle sanding
- Miter gauge included

ITEM# 9681114: Dimensions: 15-1/2"D x 14"W x 23"H



Item #	Motor	Disc Size	Disc RPM	Disc Table	Belt Size	Belt Platen	Belt SFPM	Dust Port	Weight
9681114	1/2HP 120V 4.3A	6"	3600	6-1/4" x 9"	4" x 36"	12" x 4-7/8"	1900	2-1/2"	33 lbs.

ECONOMY 6" X 9" BELT & DISC SANDER

Powerful 6" x 9" belt & disc sander designed for heavy sanding jobs. The 6" x 48" abrasive belt operates at 1836 SFPM for aggressive material removal. The belt arm can be adjusted anywhere from horizontal to vertical position depending on your work needs. The extra large platen area provides a flat sanding surface to handle a variety of jobs. The 9" PSA disc includes a table for precise sanding of angles and miters or just for finish sanding of cuts.

- 1HP 120V 8.0A motor easily operates off of household electrical
- Cast aluminum disc table tilts up to 45° for angle sanding
- Miter gauge included
- Includes a locking switch to prevent unauthorized use

ITEM# 9681115: Dimensions: 18"D x 14"W x 23"H



Item #	Motor	Disc Size	Disc RPM	Disc Table	Belt Size	Belt Platen	Belt SFPM	Dust Port	Weight
9681115	1HP 120V 8.0A	9"	2510	6" x 11-1/2"	6" x 48"	14-1/2" x 6"	1836	2"	72 lbs.

COMBINATION 6" X 9" BELT & DISC FINISHING MACHINE

Palmgren’s direct drive combination belt and disc finishing machines grind, sand, finish, polish, deburr and contour all types of materials and parts. The direct drive power train with a heavy duty capacitor motor allows the units to work under load without slowing or bogging down.

- Belt operates in the horizontal or vertical position and is designed for fast, easy belt changes
- Both the belt and disc come with a tilting work table that is slotted to accept the standard miter gauge
- The base is cast iron for maximum rigidity
- 9681093 - 6 x 48" belt with a 9" disc floor model with open stand

DIMENSIONS: 22" D x 26-1/2" W x 55"H



Item #	HP	Volts	Amps AC	Disc Dia.	Disc Speed RPM	Belt Size	Belt SFPM	Disc Table Size (RPM)	Belt Table Size	Weight
9681093	1	120 /240	9.0/4.5	9"	3450	6" x 48"	2700	5-7/8 x 11-3/4	5-7/8" x 9-7/8"	110 lbs.

COMBINATION 6" X 48" BELT & 10" DISC FINISHING MACHINE

Palmgren's Combination 6" x 10" Universal Finishing Machine is a versatile, economical workshop tool. Designed around actual end user input; this differentiates our machine with meaningful features built around what the machine must do when it is in use to maximize user performance and safety. This 2 in 1 machine can handle a multitude of jobs: contour part finishing, flat stock finishing, polishing, grinding and deburring, handling virtually any finishing operation.

- Powerful direct drive power train
- Adjustable guarding for both the belt and disc sections
- Single dust collection port for both sections for easy connection and cleaning
- Cast iron tilting worktables with a slot for miter gauge and easy to read trunnions
- Deluxe miter gauge ideal for plain and compound angles
- Sturdy open design steel floor stand
- Safety lock out on/off switch

BELT SECTION

- Belt arm adjusts vertically, horizontally and any position in-between
- Upper idler drum supported on both sides with bearings
- Steel platen with replaceable graphite pad
- Advanced easy belt tracking
- Quick, easy belt changes
- Belt section mounted directly to the motor shaft

DISC SECTION

- Fully machined and balanced steel disc
- Disc mounted directly to the motor shaft



Item #	HP	Volts	Phase	Amps AC	Disc Dia.	Disc Speed RPM	Belt Size	Belt SFPM	Disc Table Size (RPM)	Belt Table Size	Dust Chute Size	Depth	Width	Height	Weight
9681109	1	115/230	1	9.5/4.75	10"	1720	6" x 48"	2258	11-1/4" x 7-1/4"	8-5/8" x 6"	4"	30"	18"	52"	141 lbs.



Belt arm adjusts vertically, horizontally and any position in-between



Includes table for sanding radial edges

COMBINATION 6" X 48" BELT & 14" DISC FINISHING MACHINE

Simplify all your finishing needs! Palmgren's Combination 6" x 14" Universal Finishing Machine offers a combination of exceptional versatility and high efficiency. Designed around actual end user input; this differentiates our machine with meaningful features built around what the machine must do when it is in use to maximize user performance and safety. This 2 in 1 machine can handle a multitude of jobs: contour part finishing, flat stock finishing, polishing, grinding and deburring, handling virtually any finishing operation.

- Powerful direct drive power train
- Adjustable guarding for both the belt and disc sections
- Single dust collection port for both sections for easy connection and cleaning
- Cast iron tilting worktables with a slot for miter gauge and easy to read trunnion
- Deluxe miter gauge ideal for plain and compound angles
- Heavy duty, fully enclosed steel stand with storage
- Safety lock out on/off switch

BELT SECTION

- Belt arm adjusts vertically, horizontally and any position in-between
- Upper idler drum supported on both sides with bearings
- Steel platen with replaceable graphite pad
- Advanced easy belt tracking
- Quick, easy belt changes
- Belt section mounted directly to the motor shaft

DISC SECTION

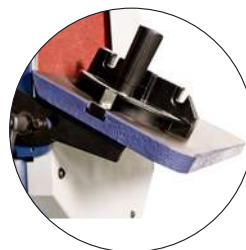
- Fully machined and balanced steel disc
- Disc mounted directly to the motor shaft



Item #	HP	Volts	Phase	Amps AC	Disc Dia.	Disc Speed RPM	Belt Size	Belt SFPM	Disc Table Size (RPM)	Belt Table Size	Dust Chute Size	Depth	Width	Height	Weight
9681108	1.5	115/230	1	12.5/6.25	14"	1720	6" x 48"	2258	15-5/8" x 7-1/4"	8-5/8" x 6"	4"	31"	22"	57"	180 lbs.



Belt arm adjusts vertically, horizontally and any position in-between



Includes table for sanding radial edges

6" X 12" BENCH SURFACE GRINDER

This economical 6" x 12" manual surface grinder has many features found on larger units and is a perfect choice for small shops, tool rooms and maintenance shops when close tolerances are needed. Bring mirror-like finishes to your metalworking projects with this professional grinder.

- Meehanite cast iron construction- stress relieved to minimize vibration while maintaining rigidity and accuracy
- Precision steel balls produce extremely smooth operation of table along the ways
- Hand scraped ways
- Spindle and motor are a direct drive design and are dynamically balanced minimum vibration
- Swarf guard
- Large easy to read dials
- Spiral bevel gear for easy vertical movement of the spindle head
- 9670109 Optional Steel Floor Stand

DIMENSIONS: 41" L x 28-3/4" W x 38-3/8" H



Shown with optional
9670109 Floor Stand
and 9682130 Magnetic Chuck

OPTIONAL ACCESSORIES

Item	Description
9682130	Permanent magnetic chuck
9670109	Heavy duty steel floor stand

Item #	HP	Voltage	Phase	RPM	Table Size	T-Slot Size	Max. Grinding		Table to Center of Spindle	Wheel Size (Dia x W x Bore)	Vertical Feed Graduation	Cross Feed Graduation	Coolant Pump	Weight
							Length	Width						
9682122	3/4	115	1	3600	6" x 12"	1/2"	12-1/2"	6-11/16"	11	7" x 1-1/2" x 1-1/4"	0.0005"	0.001"	No	450 lbs.

ELECTRIC ROTARY TOOL

Palmgren's corded variable speed rotary tool offers the precision and control required to complete a wide variety of applications. Its variable speed control allow you to set the speed of the tool to match a particular tool bit or task at hand. Its lightweight abs plastic body provides comfort added strength for long term use and durability.

STANDARD FEATURES:

- 1/8" collet chuck with built in spindle lock for fast, easy tool changes
- Variable speed for 3000 to 30,000
- On/off switch and marked variable speed control switch for precise speed selection
- Cool running ball bearing construction for smooth quiet operation
- Comes with one spiral cut carbide engraving point



Item #	Amperage	Speed Range	Voltage	Cord Length	Weight
9650000	1.1	3000 to 30,000	120	6'	1.7 lbs.

ELECTRIC ROTARY TOOL KIT

Item # 9650001

Includes electric rotary engraving tool # 9650000 and items listed below:

- 1 - Black storage case
- 1 - Clear accessory storage case
- 5 pcs fiberglass reinforced 1-1/4" cut off wheels
- 5 pcs 15/16" cut off wheels
- 1 - Mandrel for cut off wheels
- 1 - 25/32" silicon carbide grinding stone
- 1 - 3/8" alum. oxide grinding stone
- 1 - 3/8" cone shape alum. oxide grinding stone
- 1 - Engraving tungsten carbide bit
- 1 - 1/8" cylindrical carbide burr
- 1 - 1/4" included angle carbide bit
- 1 - Pointed cone diamond tip bit





HEAVY DUTY TOOL STAND

- Fits all bench grinders, buffers and belt grinders
- Multi-hole top for easy securing of finishing tool to stand
- Quench pot

Item # 9670101

BENCH GRINDER STAND

- 2 slots in column for spare grinding wheels
- Enlarged quench pot
- Multi-hole top for easy securing of finishing tool to stand

Item # 9670100



GRINDER STAND

- Cabinet self-contained filtration system designed to efficiently remove and filter dust, small metal chips and other contaminants while returning clean air to the shop
- Comes with one flexible metal connection hoses
- Dust Collection with auto start
- Auto on/off mode

Runs on 1.5 HP, 115V, single phase motor.

Item # 9686003



DUST COLLECTORS
WOOD ONLY

Palmgren dust collectors help reduce dust particles in the air which can be hazardous to your health. They also keep your shop clean to prevent accidents. Model # 9686009 is lightweight and compact and can be connected to any tool. It includes a 22 gallon clear dust collection bag so you know when it needs to be emptied. The larger unit, 9686010 comes with a dual voltage motor and 1490 CFM to allow the user to connect two machines or connect to a shop dust collection system (not included). The 40-gallon collection bag may be reused or replaced. See below for replacement bags.

- 5-Micron filter bags
- Replaceable clear poly collection bags
- Portable, includes casters
- Locking rocker switch to prevent unauthorized use

ITEM# 9686009
650 CFM Dust Collector
Dimensions: 20"D x 35"W x 61"H

ITEM# 9686010
1490 CFM Dust Collector
Dimensions: 27"D x 36"W x 76"H

OPTIONAL
ACCESSORIES

Item	Description
9686008	Replacement bag for Item# 9686009
9686007	Replacement bag for Item# 9686010

Item #	Motor	CFM	Hose Size	Filter Bag	Collection Bag	Casters	Weight
9686009	3/4HP 120V 4.5A 1PH	650	4" x 78"	5 Micron	22 Gallon	2 x 6"	62 lbs.
9686010	2HP 120/240V 15/7.5A 1PH	1490	4" x 72"	5 Micron	40 Gallon	4 x 2"	112 lbs.



GRINDING WHEEL DRESSERS

Item # 9682901 - Small grinding wheel dresser, cast iron construction, hardened steel cutters, for use on grinding wheels up to 1" wide.

Item # 9682902 - Large grinding wheel dresser, cast iron construction, hardened steel cutters, for use on 1" to 3" wide grinding wheels.

Item #	Description	Arbor	Face	Material
6" Grinding Wheels				
9602034.00	6" Grinding Wheel (36 Coarse Grit)	1/2"	3/4"	Aluminum Oxide
9602033.00	6" Grinding Wheel (60 Medium Grit)	1/2"	3/4"	Aluminum Oxide
9602041.00	6" Grinding Wheel (120 Fine Grit)	1/2"	3/4"	Aluminum Oxide
9636468.00	6" Open-Wire Wire Wheel	1/2"	3/4"	Steel
7" Grinding Wheels				
9602036.00	7" Grinding Wheel (36 Coarse Grit)	5/8"	1"	Aluminum Oxide
9602035.00	7" Grinding Wheel (60 Medium Grit)	5/8"	1"	Aluminum Oxide
8" Grinding Wheels				
9602038.00	8" Grinding Wheel (36 Coarse Grit)	5/8"	1"	Aluminum Oxide
9602037.00	8" Grinding Wheel (60 Medium Grit)	5/8"	1"	Aluminum Oxide
9602042.00	8" Grinding Wheel (120 Fine Grit)	5/8"	1"	Aluminum Oxide
9636469.00	8" Open-Wire Wire Wheel	5/8"	1"	Steel
9635517.00	8" Open-Wire Wire Wheel	5/8"	1"	Brass
10" Grinding Wheels				
9602040.00	10" Grinding Wheel (36 Coarse Grit)	1"	1"	Aluminum Oxide
9602039.00	10" Grinding Wheel (60 Medium Grit)	1"	1"	Aluminum Oxide
9602043.00	10" Grinding Wheel (120 Fine Grit)	1"	1"	Aluminum Oxide
12" Grinding Wheels				
9624863.00	12" Grinding Wheel (36 Coarse Grit)	1-1/4"	2"	Aluminum Oxide
9624888.00	12" Grinding Wheel (60 Medium Grit)	1-1/4"	2"	Aluminum Oxide
9602044.00	12" Grinding Wheel (120 Fine Grit)	1-1/4"	2"	Aluminum Oxide



BUFFER GUARDS

- Heavy steel construction
- Easily mounts to endshields of buffer
- Left or right side wheel operation
- Swivel hood for maximum coverage but still provides plenty of buffing wheel work surface
- 1-1/2" Dust Port extends from rear panel for connection to dust collection system
- Helps minimize flying parts and buffing compound dust

Item # 9682099 – Buffer Guard for 6" & 8" Buffers

Item # 9682100 – Buffer Guard for 10" Buffers



**For a detailed catalog of the
full line of Palmgren Machine
Tools visit our web site:**

**www.palmgren.com or e-mail
us to request a printed or
electronic (pdf) catalog at:
sales@chhanson.com**

Palmgren is part of the family of
brands of the C. H. Hanson Company.
C. H. Hanson is one the nation's oldest
manufacturers and has been family-
run for five generations.

C.H. Hanson's family of brands,
Hanson, Hansco-Mark, and
Palmgren offer a wide range
of high-quality products that
are used every day across a
broad range of industries.

C.H. Hanson has a rich
history of truly building
"Tools for Generations."

PALMGREN

2000 N. Aurora Road
Naperville, IL 60563
p: 800-827-3398
f: 800-827-5834
sales@chhanson.com
www.palmgren.com