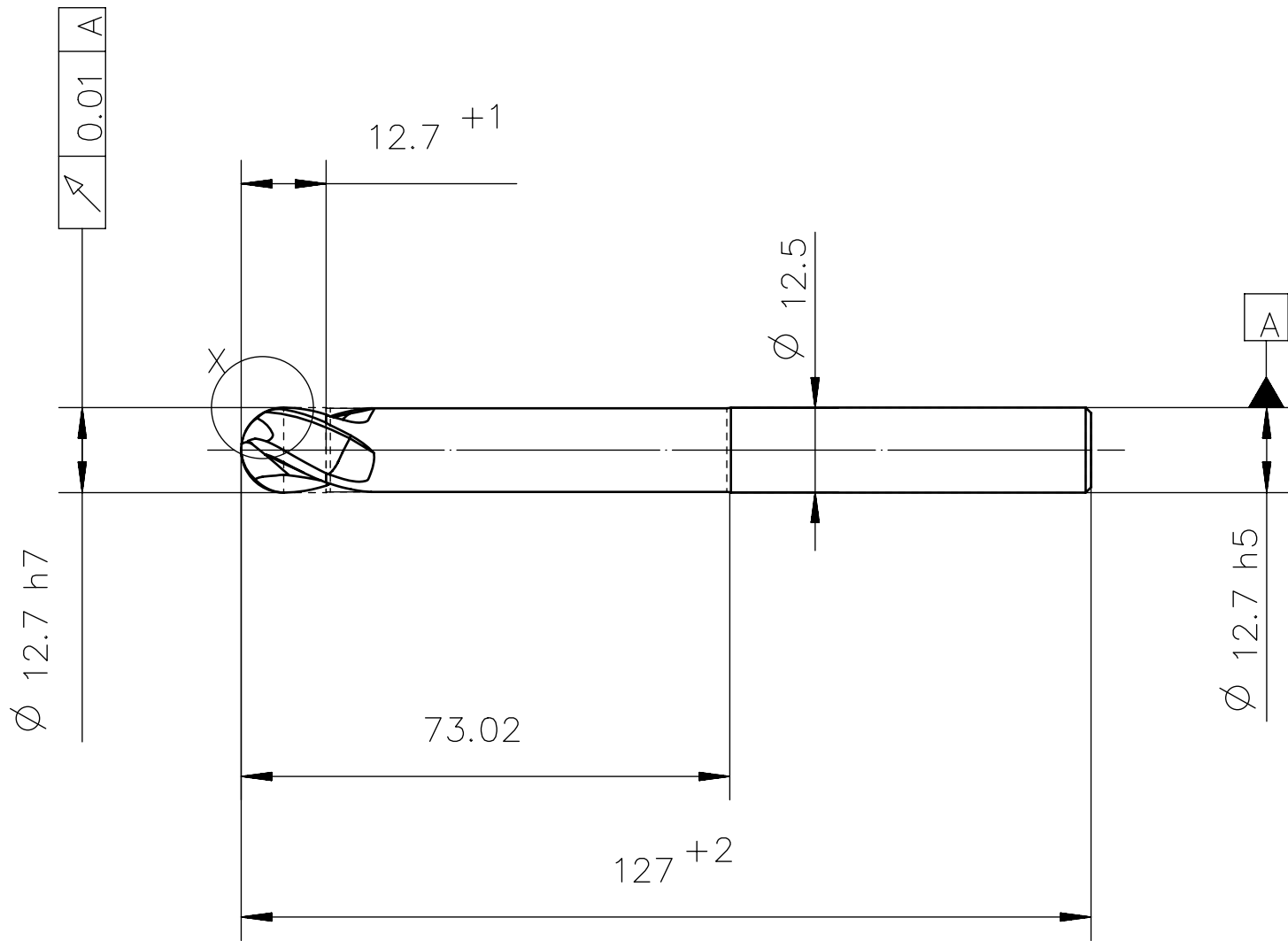
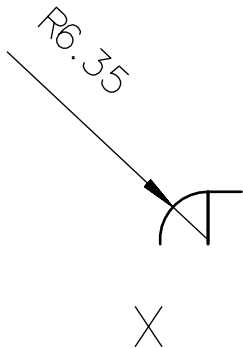
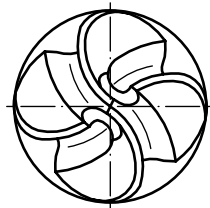


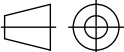

Characteristics:	
Number of teeth	4
Cutting direction	right
Spiral direction	right
Spiral angle	30
Type of face	center cut
Type of shank	DIN 6535 HA



center cut



2:1

Qty.	Description				Det.	Dwg. No.		Material			
<b>Proprietary Information DIN ISO 16016:2002-5</b>  We reserve all Rights to this drawing including for the purpose of issuing patents and registration of petty patents. Without our written consent this drawing may not be copied, whole or partially, and may not be misused by the recipient as well as third parties. Any infraction will result in compensation for occurred damages and could lead to legal action by the author.							Scale: 1:1		Format: A3		
							Material: A1007				
							Surface: TAX				
											
	Date	Name									
Drawn	02.01.12	PROTOTYP									
				Checked		Description:  Protostar HSC30  12.7 x 12.7					
						Drawing-No.:					
						1AH8001918-5543774				D10	
Rev.	Revision		Date	Name	Cust. No.:		Ord.-Code: AH8001918-1/2-2.875				