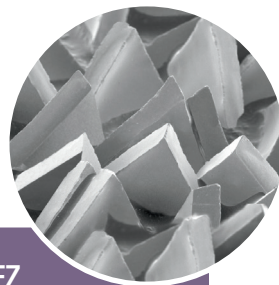


CUBITRON™ II

As the precision shaped triangular grain wears, it continuously fractures to form sharp points and edges. The result is a belt that cuts faster, stays cooler and lasts longer than other competitive belts.



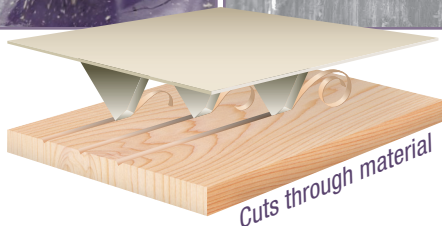
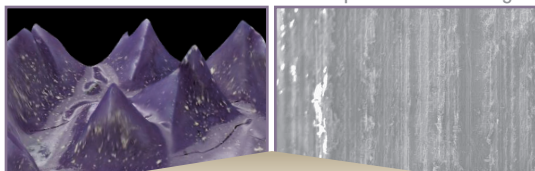
3M™ Cubitron™ II Belts Engineered for Woodworking — 991FZ and 990FZ

- Precision shaped grain constructed on heavy duty ZF (36+) or YF (60+ and finer) cloth backing
- Advanced antistatic coating reduces loading and increases belt life — resulting in fewer belt changes and more production time
- High strength and robust construction for demanding applications:
 - 991FZ: closed coat construction extends abrasive belt life and provides a uniform finish
 - 990FZ: open coat construction reduces loading and increases cut rate for greater stock removal

The Cubitron™ II Difference

Abrasive Structure

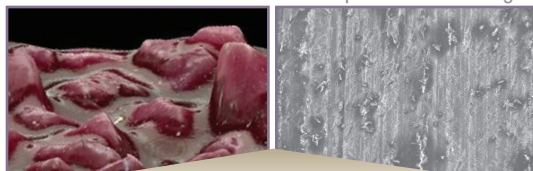
Workpiece After Sanding



Conventional Abrasive

Abrasive Structure

Workpiece After Sanding



Advanced belt manufacturing technology from 3M's state-of-the-art abrasives maker.



Investing in Industry — With our state-of-the-art manufacturing facility in Alexandria, Minnesota, 3M has reinvested in the USA and has re-formulated its woodworking belt construction to dramatically increase overall productivity per belt.

www.go.3M.com/FZ

3M and Cubitron are trademarks of 3M. Used under license in Canada.
© 3M 2013. All rights reserved. Please Recycle. Printed in U.S.A.

3M